

LMCAB Multi Cables Ruggedized Cable Assemblies

Management Cable
Multi I/O Cable
CANbus Cable



DESCRIPTION

LMCAB series introduces Expansion cable accessory designed for high speed data transmission in industrial or military environments. This data cable meets the requirements of Standards EIA/TIA-568B and is equipped with ruggedized connector on the server side and industrial IP65 connectors on the peripheral side.

KEY FEATURES

- Halogen Free Flame Retardant Polyether-based Polyurethane. Glossy finish. Excellent hydrolysis resistance, High microbial resistance. UV resistant. High flexibility.
- Ruggedized design for field installations, IP65 protection class.
- Main cable Connector 37-pin MIL-DTL-D38999 type, 26WD35PN.

CABLE STANDARDS

- Ethernet Cable, modular connectors RJ45, a 4 pair, 24 AWG, 100 Ohm SFTP round patch cable, designed to the ISO/ IEC 11801 Category 5e requirements (cat5e on 76 m). The cable contains 4 twisted pairs, cabled, double shielded with kevlar reinforcement strands, jacketed in black UV resistant Polyurethane HFFR. Designed for fixed or portable applications in harsh environments.
- USB 2.0, maximum signaling rate of 480 Mbit/s.
- RS-232 standard is commonly used in computer serial ports.

APPLICATIONS

- Light Mobile Computing Platform LMCP-28H, LMCP-7H
- Switches LMSW-E33
- Routers LMSR-R63

Connectors details:



Connector description:
RJ-45 female
Cat. 5e/6a
Waterproof IP65



USB female



RS232, DB9 male



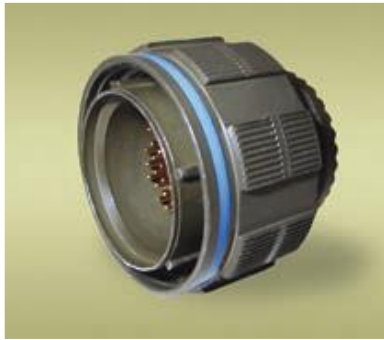
VGA, DB15 male



D38999/26WA35PN

- Note:** 1) RJ-45, RS232 and USB connectors are equipped with a Dust cap as a standard.
2) USB3 cables are connected to the separate ports

MIL-DTL-38999: 26WD35PN straight cable plug

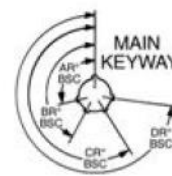


Polarization

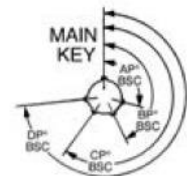
- N** = Normal Standard
- A** = Highly-Popular
- B** = Limited Availability
- C** = Check for Availability
- D** = Check for Availability

N polarization: standard
A polarization: on request

Receptacle



Plug



DESCRIPTION OF CABLES

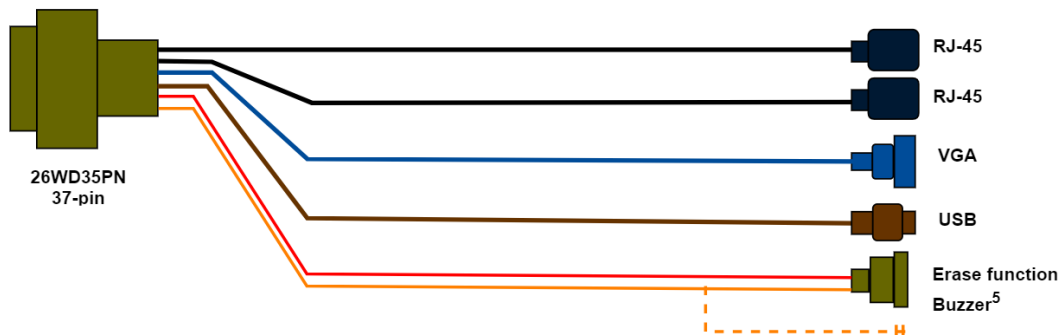
1. LMCP-28H

1.1. Management Cable with discs erasing functionality

Ordering Code: LMCP28CAB-MNG-xx xx – length (m)

Description:

2x Ethernet RJ-45 female, 1x VGA male, 1x USB female, 1x 6-pin 26WA35PN – data erasing



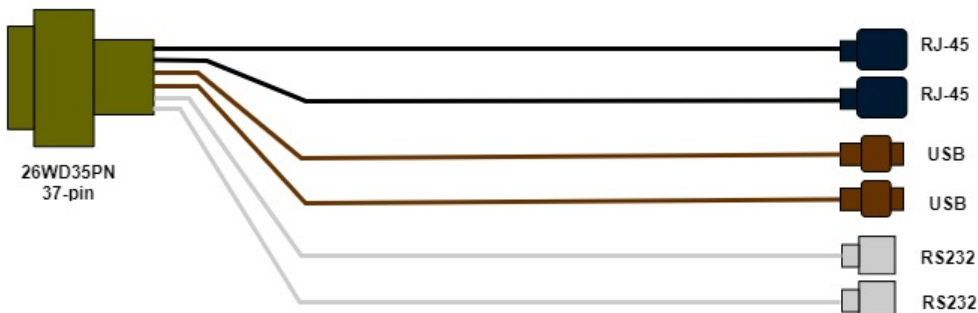
- Note:**
- 3) Other connector types on request
 - 4) 2 m standard cable length, different cable length on request
 - 5) Standard configuration: both Erase wires and Buzzer wires terminated in one D38999/26WA35PN connector
On request: Buzzer – separate 2-wires unterminated cable

1.2. Multi I/O Cable

Ordering code: LMCP28CAB-MLT-A-xx xx – length (m)

Description:

2x Ethernet RJ-45 female, 2x USB female, 2x RS232 male



Note: 6) other configuration on request, max number of ports depends on device configuration

1.3. CANbus Cable

LMCP28CAB-CAN-xx

xx: Cable length: m
 Connector A: D38999/26WA35PN
 Connector B: NC (no connector) or on request

PIN #	Signal Name	Description
1	PWR	Power
2	CAN_L	CAN Low
3	CAN_H	CAN High
4	GND	Ground
5	GND	Ground
6	GND	Ground

2. LMCP-7H

2.1. Management cable

Port 1: D38999/26WD35PN connector



Ordering code: LMCP7CAB-MNG-A-xx

Description:

2x Ethernet RJ-45 female, 1x USB female, 1x 6-pin 26WA35PN – data erasing, (1x DB15 male)⁷

Note: 7) VGA male connector – on request

2.2. Multi I/O Cable

Port 2: D38999/26WD35PN connector

Ordering code: LMCP7CAB-MLT-A-xx

Description:

4x Ethernet RJ-45 female

Port 3: D38999 26WD35PN connector

Variable, configuration on request up to full capacity of 37-pin connector

Note: 8) up to 37-pin connector capacity

3. LMSW-E33/D38999

3.1. Management cable

Port 1: D38999/26WD35PN connector

Ordering code: LMSWCAB-MNG-A-xx

Description:
2x WAN RJ-45 female, 1x console RJ-45 female

3.2. Multi I/O Cable

Port 2-3: D38999/26WD35PN connector

Ordering code: LMSWCAB-MLT-A-xx

Description:
4x LAN RJ-45 female

4. LMSR-R63/D38999

4.1. Management cable

Port 1: D38999/26WD35PN connector

Ordering code: LMSRCAB-MNG-A-xx

Description:
2x WAN RJ-45 female, 1x console RJ-45 female

4.2. Multi I/O Cable

Port 2: D38999/26WD35PN connector

Ordering code: LMSRCAB-MLT-A-xx

Description:
4x LAN RJ-45 female

5. Power supply cable

PSCAB2-xx D385999/26WB2SN (sockets) to 2x bare Cu wires, xx -length (m)

PSCAB2-SP-xx 26WB2SN (sockets) to 26WB2PN (pin contacts), xx -length (m)

PSCAB3-xx 62GB (3 socket contacts) to 3x bare Cu wires, xx -length (m)